

# KILBRIDE, BARNDARRIG & BRITTAS BAY. WEEKLY NEWSLETTER

RCN 20016166

**Third Sunday of Lent Year A**

**8th March 2026**

*Donal Neary SJ Gospel Reflections for Year A: Matthew*

*The well is deep*

**A** famous picture has the Samaritan woman looking into the well and seeing there her image - and the image of Jesus. In the depths of the well of her life is the presence of Jesus.

In the depths of the well, when we are in love, pain, death, decision, joy, we find God. God is near when we are near to ourselves, even in shame and sin. We thirst for meaning in life, for knowing we are totally loved, for community and companionship - and God offers all this.

This is the offering of God - the living water is the Holy Spirit. We thirst for inclusion - the disciples in this story did not want Jesus talking to a woman. So much of the religion of the time separated people. In the depths of the well we are all equal.

We find the mercy of God in the well. As we go into the depths of prayer and ourselves we are open to mercy. We may put conditions on God's mercy - naming our sins, or numbering them. At the bottom of the well is the water of mercy.

Of the mercy of God, Pope Francis says that '*there is no sin or crime of any kind that can erase from the mind or heart of God even one of the children he has created*' (November 2013).

*Imagine yourself looking into a well;  
see the face of Jesus looking at you from its depths.  
He looks at you with love.  
Lord, send me the living water of the Holy Spirit.*



## PARISH CONTACTS

**Fr Aquinas Duffy : 0404 67196 // Fr Gerard Deegan : 0404 67133**

**Parish Office: 0404 61699**

**Email: [parishofficewicklow@gmail.com](mailto:parishofficewicklow@gmail.com), Website: [www.stmantan.ie](http://www.stmantan.ie)**

**Office opening times**

**Monday - Friday: 10am - 12.30pm**

	THIS WEEK WE REMEMBER	NEXT WEEK WE REMEMBER
<b>SATURDAY BARNDARRIG 7.30PM</b>	<b>Frank Harding R.D</b>	
<b>SUNDAY KILBRIDE 9.00AM</b>	<b>Special Intention</b>	
<b>SUNDAY BRITTAS BAY 12Noon</b>	<b>John Reddaway R.D</b>	<b>James &amp; Nora Higgins (A) Jane McGrath (A)</b>
<b>WEDNESDAY BARNDARRIG 10AM</b>	<b>Special Intention</b>	

### Exposition of the Blessed Sacrament

- Ashford: 1st Friday after Mass  
Wicklow: Mondays and Thursdays after Mass  
Kilbride: 1st Thursday at 7pm (Divine Mercy)  
Brittas Bay: Thursdays at 9am



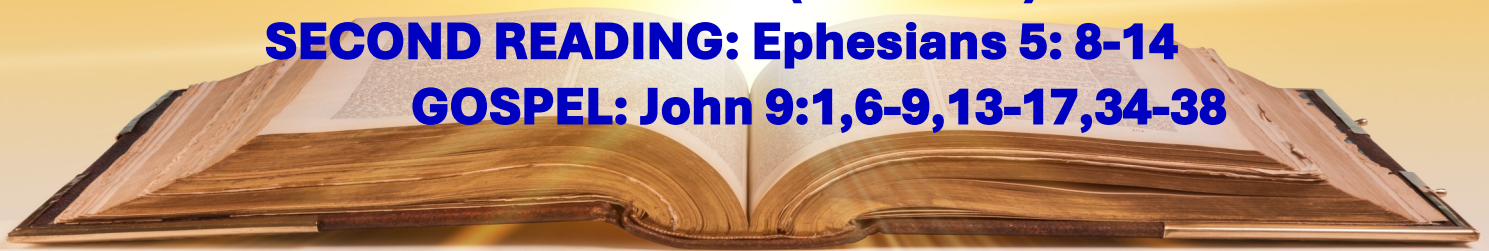
If you would like to reflect on next Sundays Readings, please check...

**FIRST READING: Samuel 16: 1,6-7,10-13**

**PSALM: (Psalm 22)**

**SECOND READING: Ephesians 5: 8-14**

**GOSPEL: John 9:1,6-9,13-17,34-38**



### Parish of Kilbride, Barndarrig and Brittas Bay Stations of the Cross



Join us this Lent for a special family-friendly Stations of the Cross. With simple prayers, stories, and songs, children can take part and learn about Jesus's journey of love.

Date: 13th March Time: 7:30pm

Location: Saint Brigid's Church, Kilbride

All are welcome – Together, we will walk with Jesus on His journey of love.

# Baptism in the St. Mantan Pastoral Area

Wicklow	First Saturday	2.00pm
	Third Sunday	1.00pm
Rathnew	Fourth Saturday	2.00pm
Ashford	First Sunday	12 noon
Glenealy	Third Saturday	12 noon
BBK	Second Saturday	2.00pm



**Baptism Meeting - De La Salle Centre at 8.00pm on the 12th March**

## WEEKLY COLLECTIONS

**1st March 2026**

Here is where your donations go to.

*Many thanks for your continued support.*

<b>PARISH ENVELOPE &amp; STANDING ORDER DONATIONS</b>	<b>1ST COLLECTION COMMON FUND &amp; DUES ENVELOPES</b>	<b>2ND COLLECTION SHARE</b>
<p>The Envelope/Standing Orders are what funds the Parish through its donations. They stay locally in the parish and are vital to sustain our Parish. These envelopes and Standing Orders maintain the Churches, Parish Centre, Houses, general maintenance and administration expenses.</p>	<p>The Common Fund account is funded by all the loose notes &amp; coins in the First Collection. It is used to provide suitable and equitable remuneration and support for all priests serving in the diocese, including active, sick, and retired clergy.</p>	<p>The Share account is funded by all loose notes &amp; coins in the Second collection. It is primarily used to finance central support services for all parishes, and to provide financial assistance to low-income parishes.</p>
<p>The money received in these envelopes is lodged directly to the Parish account.</p>	<p>This loose money is lodged directly to the Diocesan Common Fund Account</p>	<p>This loose money is lodged directly to the Diocesan Share Account Accord Collection</p>
<p><b>€365</b> 14 envelopes received</p>	<p><b>€665</b></p>	<p><b>€350</b></p>

## Epilepsy Ireland Collection

Epilepsy Ireland is holding a collection in Britas Bay, Barndarrig & Kilbride on the 14<sup>th</sup> & 15<sup>th</sup> of March. Your support for this collection would be very much appreciated.

St. Mantan's Partnership of Parishes invites you to a meditative service:

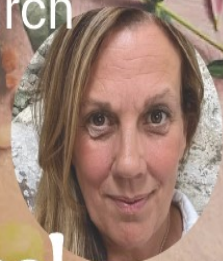
## What does Lent mean to me?



St. Patrick's Church, Wicklow Town, A67 AE37  
Tuesday March 10<sup>th</sup> at 7.30pm

WORKSHOP

Saturday 21. March  
2pm to 5pm



## Spring Herbal Workshop

with Jo Segrave Daly,  
The Glendalough Herbalist

AN TAIRSEACH

KILMANTIN HILL, WICKLOW TOWN  
0404 61833 [www.antairseach.ie](http://www.antairseach.ie)

Your contribution to the Church is your appreciation for your parish.

If you would like to become a regular supporter to the Parish, please fill in this slip and return to the Parish Office or Sacristy

Name.....

Contact Number.....

Address.....

## Hope is beautiful.

Give hope to those who have lost faith in it.

Give peace to those who don't know what it's like.

Give kindness to those who are struggling with their pain.

